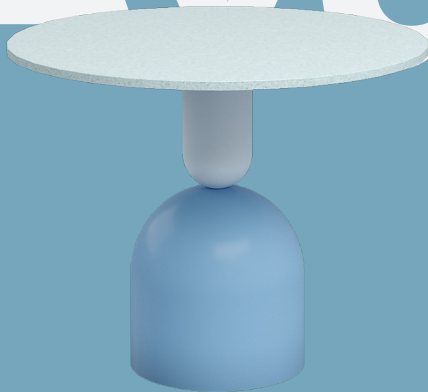


# Avda



Bar Table / Cafe Table / Side Table



Available Spring 2019

## Introducing Ava

Designed in-house at Harry the Hirer, Ava is a sculptural table collection suitable for indoor and outdoor use. Featuring contemporary, playful two-tone colours, Ava is your next event essential.



[harrythehirer.com.au](http://harrythehirer.com.au)



### Specifications

Bar table (base)  
1090 x 300  $\phi$

Cafe table (base)  
750 x 400  $\phi$

Side table (base)  
450 x 250  $\phi$

### Colours



 Indoor / Outdoor

# Bentwood



Outdoor chair



Available Spring 2019

## Bentwood chair

Now suitable for outdoor use, our classic cafe-style staple, the Bentwood, has been re-imagined into white polywood with a timber look.



[harrythehirer.com.au](http://harrythehirer.com.au)



### Specifications

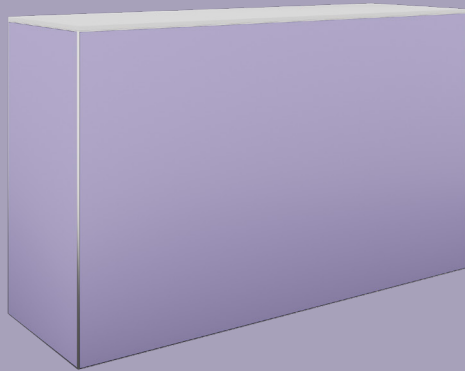
Dining chair  
550 x 405 x 870

### Colours



 Indoor / Outdoor

# Chameleon



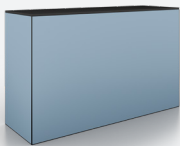
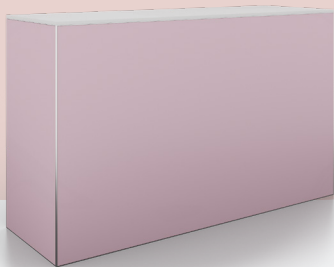
Food Station / Service Bar



Available Spring 2019

# Chameleon

Our ever expanding range of Chameleon service bars and food stations are now available in a comprehensive selection of new season colours.



## Specifications

**Food Station**  
1780 x 600 x 1100

**Service Bar**  
1780 x 600 x 900

## Colours



# ELLE



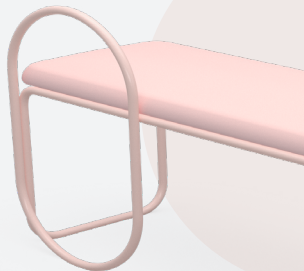
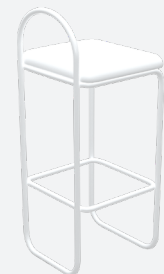
Bench / Stool / Chair



Available 8 June 2019

# Introducing Elle

Featuring graphic silhouettes and a tubular leg, Elle is the next indoor/outdoor seating collection to make a playful statement.



## Specifications

**Bench**  
1200 x 380 x 450

**Bar stool**  
390 x 365 x 915

**Chair**  
410 x 380 x 450

## Colours



 Indoor / Outdoor



# Evie



Feature chair



Available Spring 2019

# Introducing Evie

Evie is a refined feature chair with a unique high-set back that envelops you with her form. An elevated, modern take on the wing-back armchair.



## Specifications

Feature Chair  
700 x 760 x 1130

## Colours



# Florence



Chaise lounge



Available Spring 2019

# Introducing Florence

In a sweeping style reminiscent of the golden age of Hollywood, Florence is a chaise lounge finished in soft velvet and available in deep, romantic hues.



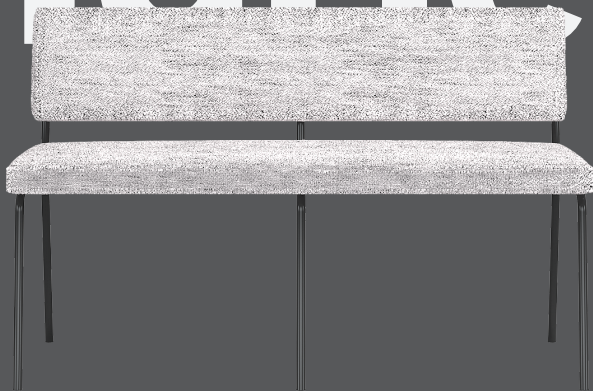
## Specifications

Chaise lounge  
1680 x 770 x 760

## Colours



# Harley



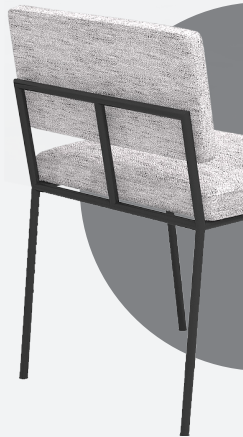
Bench / Chair / Stool



Available Spring 2019

## Introducing Harley

Harley is a seating collection with an angular, black coated frame that is contrasted by playful lamington-esque bouclé fabric seating.



### Specifications

**Bench**  
1500 x 460 x 750

**Chair**  
460 x 490 x 750

**Stool**  
460 x 460 x 1000

### Colours



# Harrison



Lounge / Armchair / Dining Chair / Stool



Available from September 2019

## Introducing Harrison

Pairing natural woven rattan, with sleek curved legs and fabric finishes, the Harrison lends itself perfectly to a contemporary setting.



### Specifications

**Lounge**  
1730 x 640 x 840

**Armchair**  
710 x 620 x 840

**Dining Chair**  
480 x 510 x 840

**Stool**  
410 x 500 x 1085

### Colours





# Hugobon



Armchair / Lounge



Available June 2019

# Introducing Hugo

Hugo is a two-part collection featuring an Armchair and Sofa. Finished in lush velvet, this comfy range is available in 4 colour-ways.



## Specifications

**Armchair**  
960 x 780 x 650

**Lounge**  
1580 x 780 x 650

## Colours



# Ivy



Chair / Stool



Available August 2019

## Introducing Ivy

Simple, stylish seating for your dining setting. A classic silhouette with a modern twist, Ivy is the seating option to elevate your event. Finished in corduroy and available in contemporary colours.



### Specifications

#### Chair

450 x 535 x 820

#### Stool

450 x 545 x 1025

### Colours



# Luca



Armchair / Lounge



Available September 2019

## Introducing Luca

Inspired by simple, Scandinavian design, the Luca seating collection is available in a series of neutral colours contrasted by black powder-coated legs.



### Specifications

#### Armchair

790 x 740 x 720

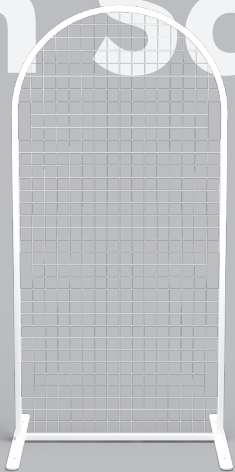
#### Sofa

1770 x 740 x 720

### Colours



# Mesh Screen



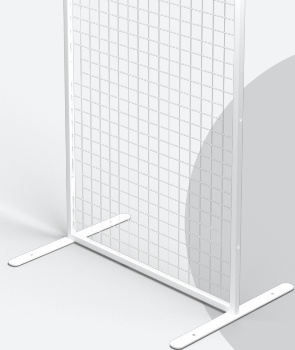
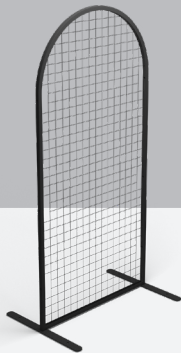
Small / Large



Available Spring 2019

# Mesh Screen

Create the ultimate backdrop with our new, connectible Mesh Screens, available in 2 different sizes and in black or white.



## Specifications

### Large

850 x 25 x 2350

### Medium

850 x 25 x 1750

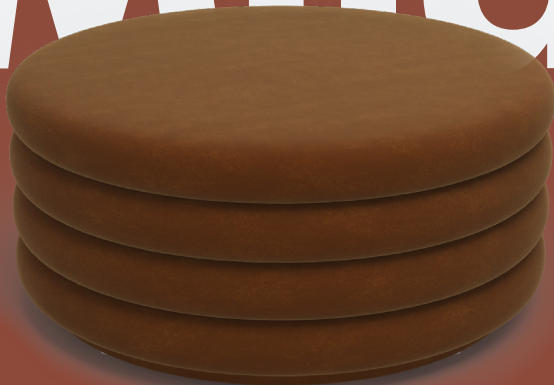
## Colours



 Indoor / Outdoor



# Milda



Small / Large / Bench



Available August 2019

# Introducing Mila

Mila is a distinct, geometric ottoman which embraces a softly stacked form. Available in three different sizes, and finished in soft-hued plush velvet.



## Specifications

**Small round ottoman**  
450 x 600  $\phi$

**Large round ottoman**  
450 x 900  $\phi$

**Bench ottoman**  
1200 x 450 x 500  $\phi$

## Colours



# Xavier



Chair / Lounge



Available Spring 2019

# Introducing Xavier

This low-set, minimal style seating collection features a unique, mirrored silhouette and is finished in soft, felt fabric.



## Specifications

**Armchair**  
790 x 866 x 755

**Sofa**  
1575 x 866 x 755

## Colours



# Yve



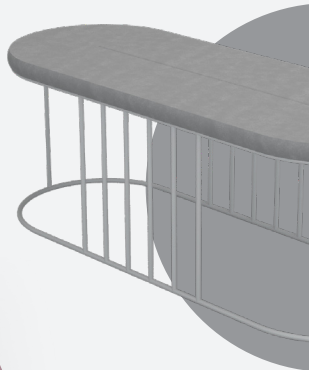
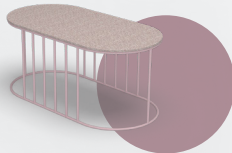
Bench / Chair / Coffee Table



Available Spring 2019

## Introducing Yve

Light, sculptural lounging with cage-style bases. Yve is finished in luxe velvet and is available in a bench, feature chair, and coffee table option.



### Specifications

**Bench**  
1200 x 450 x 450

**Chair**  
850 x 500 x 735

**Coffee table**  
900 x 450 x 400

### Colours

